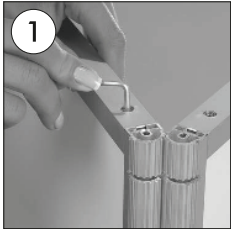


CONVEX COUNTER DISPLAY

ASSEMBLY GUIDE

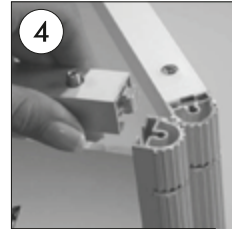
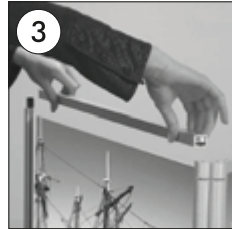
Installation of inner panels



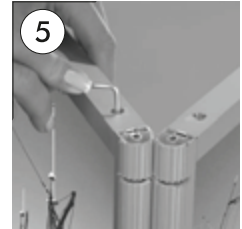
- Open the top profiles by using an allen key



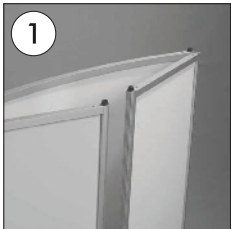
- Take out the unprinted panels. After the application of the printings on the panels, slide them inside the construction by sliding through the channels on both sides.



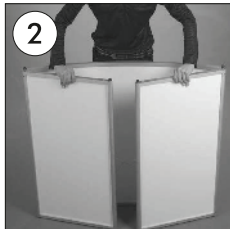
- Fix the top profiles inside channels as per the



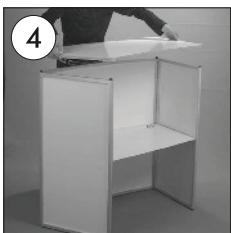
General assembly



- Position the main counter body in the upright, position.



- By opening the side panels, find the wire in the middle.



- At final step, join the top table & main body of the counter.

